



Separated Casing Patented Technology Patent No.: ZL200920238695.1

Recessed-Ceiling Screen

This screen features the "Separated Casing" patented technology that reduces noise and vibrations. This helps to eliminate the common noise problem caused by the friction between the screen casing and ceiling. This exclusive technology ensures that while the screen is completely hidden providing a seamless look there is no compromise in quality. This screen is designed to be recessed into the ceiling and is an ideal hidden solution for installations such as home cinema, office and conference rooms. The sturdy case boasts an easy to install yet functional design. The largest seamless size of this screen is 200" (4.3) or 200" (14.6). Tab-tension motorized and standard motorized applications are available in this recessed-ceiling design.

Recessed-Ceiling Series

Recessed-Ceiling Series

Recessed-Ceiling Series

- By utilizing an aluminum alloy casing, it provides the screen with a more solid and rigid structure while at the same time reducing overall weight.
- The design of the modern and attractive recessed ceiling screen blends seamlessly with any interior decoration and installation scheme.
- This screen features the "Separated Casing" patented technology that reduces noise and vibrations. This helps to eliminate the common noise problem caused by the friction between the screen case and ceiling.
- Available for all ceilings.

Separated Casing



Note: The front component board is required for the product with a 1:27 and above lens.

Control Options

1 Infrared Remote Controller
The fabric adjustment and micro control can be achieved by controller; the remote distance is 8 meters.

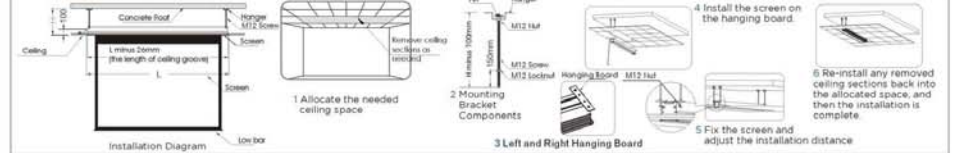
2 Central Control Adapter
Plug into the EXT CTRL slot via a 6PinC for a Central Control Adapter. Various cable lengths can be used for different installation situations.

3 Cycle-Switch
The button under the casing close to the power line is the Cycle Switch button.

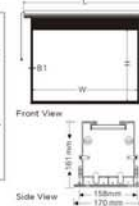
4 Integrated Control
Integrated Control End Cap

- RS485 interface
- External Infrared Remote Sensor Trigger Input
- RS485 or Control Control
- EXT-CTRL can be connected by either a wall-switch or connected to the Central Control Adapter for remote usage.

Installation



Standard Accessories



Product Specifications

Format	Model	Specification (inch)	Viewing Area (WxH)(mm)	L (mm)	A (mm)	B1 (mm)	B2 (mm)	B3 (mm)	Package LxWxH(mm)	Net/Gross Weight(kg)	Power (100W/220V)
4.3	CB-MR272	72	1443x1097	1847	1398	30	30	80	1913x840x276	36.0/21.0	115W
	CB-MR324	84	1702x1380	2333	1871	30	30	80	2319x840x276	34.0/21.2	115W
	CB-MR100	100	2030x1524	2464	1815	30	30	80	3529x840x276	24.6/10.2	115W
	CB-MR130	130	2438x1829	2962	2120	30	30	80	3928x840x276	29.3/12.4	115W
	CB-MR150	150	2846x2284	3477	2607	30	30	80	4528x840x276	35.4/16.2	115W
	CB-MR180	180	3436x2743	4147	3044	30	30	80	4213x840x276	44.2/19.8	160W
18.9	CB-MR200	200	4044x3048	4853	3509	30	30	80	4819x840x276	50.5/14.8	160W
	CB-MR277W	77	1706x1308	2129	2020	30	30	80	2193x840x276	24.5/12.8	115W
	CB-MR280W	80	1776x1394	2254	2095	30	30	80	2219x840x276	24.7/12.9	115W
	CB-MR295W	92	3037x1444	2461	2007	30	30	400	3529x840x276	27.0/10.5	115W
	CB-MR100W	100	2214x1245	2639	2038	30	30	500	2704x840x276	28.2/12.0	115W
	CB-MR106W	106	2347x1290	2771	2031	30	30	500	2852x840x276	29.2/12.0	115W
CB-MR120W	120	2452x1474	3081	2105	30	30	400	3147x840x276	31.6/13.0	115W	
CB-MR130W	130	3324x1608	3738	2409	30	30	400	3816x840x276	41.2/16.5	160W	
CB-MR180W	180	3954x2241	4474	2782	30	30	300	4540x840x276	48.5/14.8	160W	